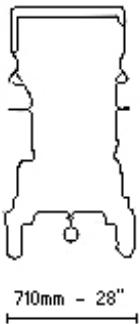
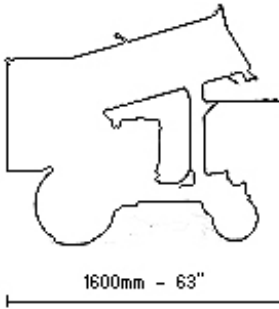


# PROF IV



## PROF IV

### PERFORMANCE

<b>Engine selection</b>	10 HP driving power 13 HP B&S Vanguard 13 HP Honda GX 390 (STD, Hydro, ZR)
<b>Hydraulic Pump</b>	Sauer Sundstrand 0.76 cc- 180 bar (Hydro / Hydro-ZR)
<b>Shreddable timberdiameter</b>	80 mm/ 3,2 inch
<b>Capacity (full box/h)</b>	3 m <sup>3</sup> chips/hour
<b>Shredding technology</b>	ELIET Chopping principle™
<b>Wheel traction</b>	Danfoss (Hydro-ZR)
<b>Chassis</b>	Steel 3 mm
<b>Feed height</b>	1000 mm
<b>Number of knives</b>	24 HS-Steel (reversable)
<b>Feed intake opening</b>	520 x 340 mm (WxH)
<b>Transmission</b>	V-belt Gates Guard Power XPA 1800
<b>Hour meter</b>	option
<b>dB(A)</b>	115 dB(A)

### DESIGN

<b>Dimensions (LxWxH in mm/inch)</b>	1600x710x1350 mm 63x28x53 inch
<b>Weight</b>	221 kg (STD) 256 kg (Hydro) 258 kg (Hydro-ZR) 223 kg (PTO)

### OPTIONS

Multi-purpose grating	●
Shaft with slip clutch (PTO)	●